

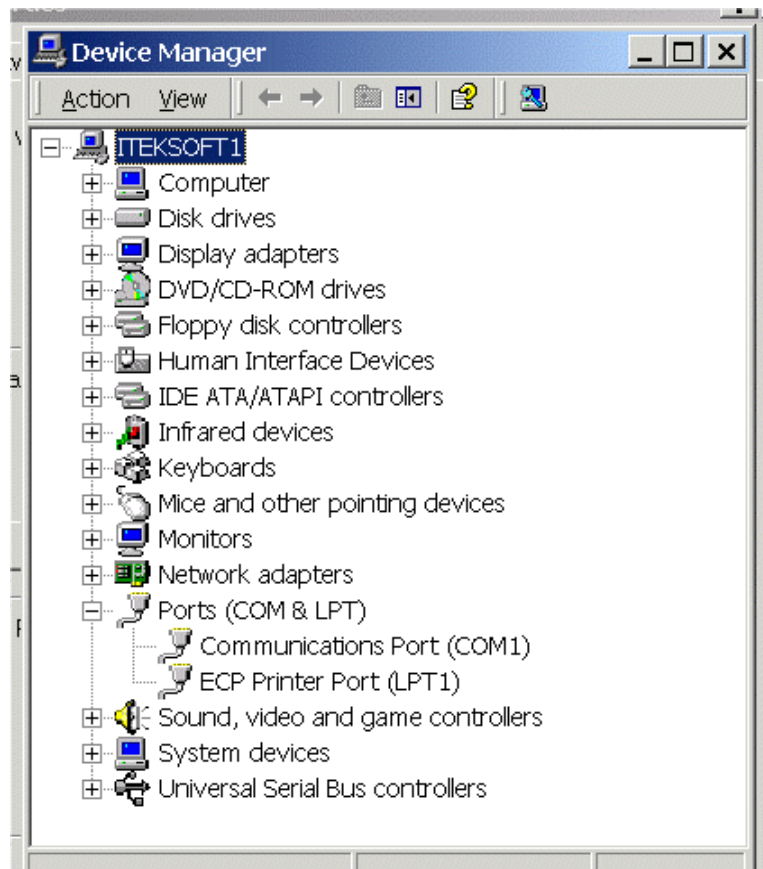
Topic: Dummy Port Add-on for eDocPrinter PDF Pro

Environment: Solution for installing eDocPrinter PDF Pro on the Computer without physical port LPT1.

Explanation: In ordinary situation, eDocPrinter PDF Pro hooks to LPT port as default. eDocPrinter PDF Pro works as a printer driver under Windows environment. Hence, though eDocPrinter PDF Pro does not use port monitor to capture any output, it still has to connect to a port as required for a printer driver. For some rare computers which having no physical LPT1 port, the default configuration of eDocPrinter PDF Pro will introduce an error while printing to the default LPT1 port. In this situation, users can set the connected port of eDocPrinter PDF Pro to some port physically available, e.g., COM1 or COM2. Since eDocPrinter PDF Pro does not rely on port monitor to finish its job, it should work normally when connecting to any physically available port.

For computers with no physical ports available, we provide a solution named as eDocPrinter Dummy Port Add-on. User can download the installation package from our website. After installation, the procedure will add a port name eDocPDF and set the default port of eDocPrinter PDF Pro to this dummy port. As the name suggests, this is just a dummy port doing nothing except for providing a port to fit Windows printer driver requirement. The following two figures demonstrate how to check how many physical ports available in the computer and the eDocPrinter PDF Pro configuration after installing the dummy port.

Check Ports in Device Manager



View the configuration of eDocPrinter PDF Pro after installing the dummy port add-on from Printer Control Panel.

