

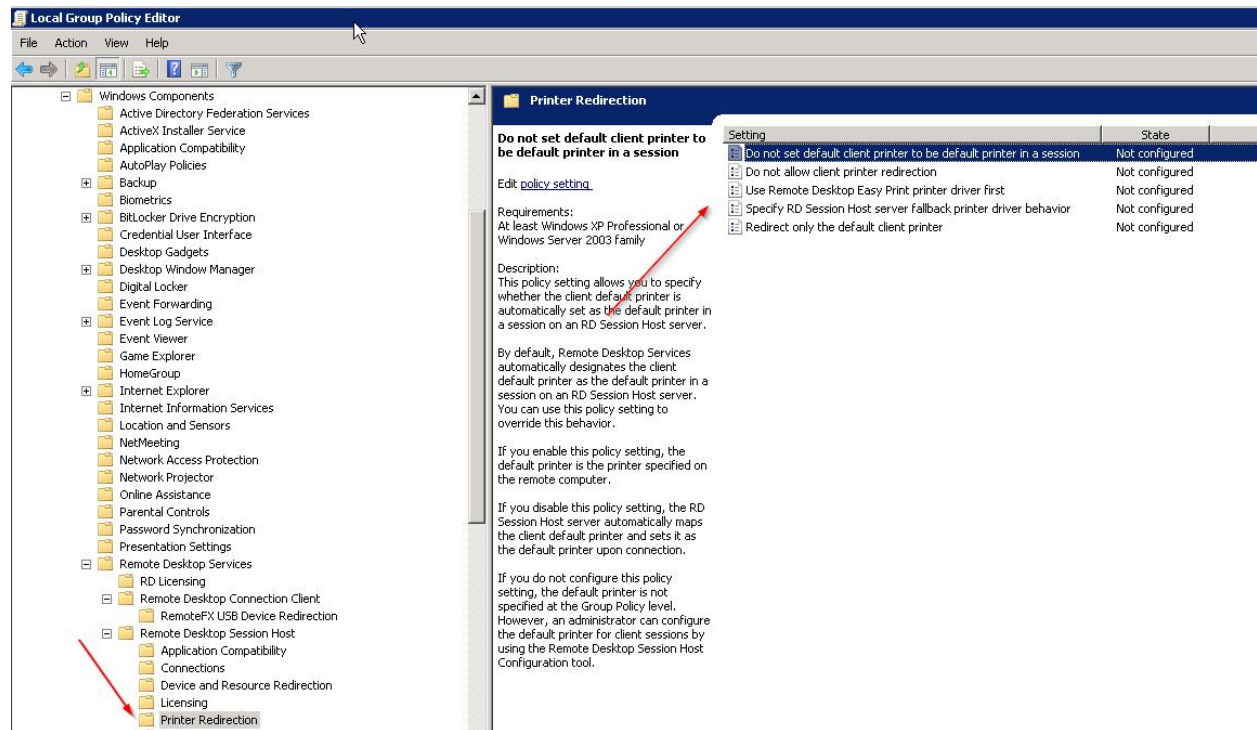
Redirect2Print

Redirect to session printers

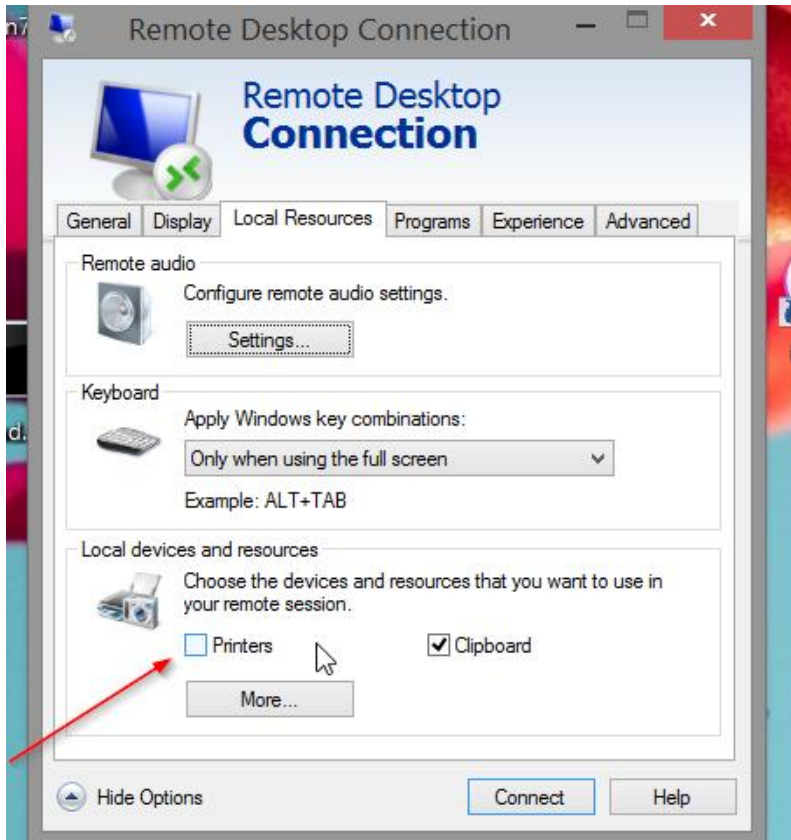
When in remote desktop session or terminal server session to a Windows server, users may print to the eDocPrinter instance installed in the server to create PDF files and redirect the current print job to other physical printers including network printers or session redirected (remapped) printers from local workstation console. The corresponding settings are in the Redirect property page. It's an optional Adv. pack feature.

Group Policy for Printer Redirection

Administrators can configure the group policies in the server for [Printer Redirection] which is for allowing RDP client printer redirection and related policies.



When configuring settings of remote desktop connections in the client side, users have to turn on to choose to use local printers in the remote session as illustrated below.



Naming of Session Printers

Users can redirect to a network printer or terminal session redirected (remapped) printer. In Redirect property page, when clicking [Add], users will be able to browse all printers available in the current user session.

However, the session printers may be renamed by adding session id or client computer name. For example, a local printer [HP PCL 6] may be renamed as [HP PCL 6 (redirected 4)] in the remote session. , [Redirect] supports resolving environment variables in the parameter "printer name". In addition, for convenience, users can use the special embedded variables %#WTSID% and %#WTCNAME% to resolving the current session ID and client workstation name.

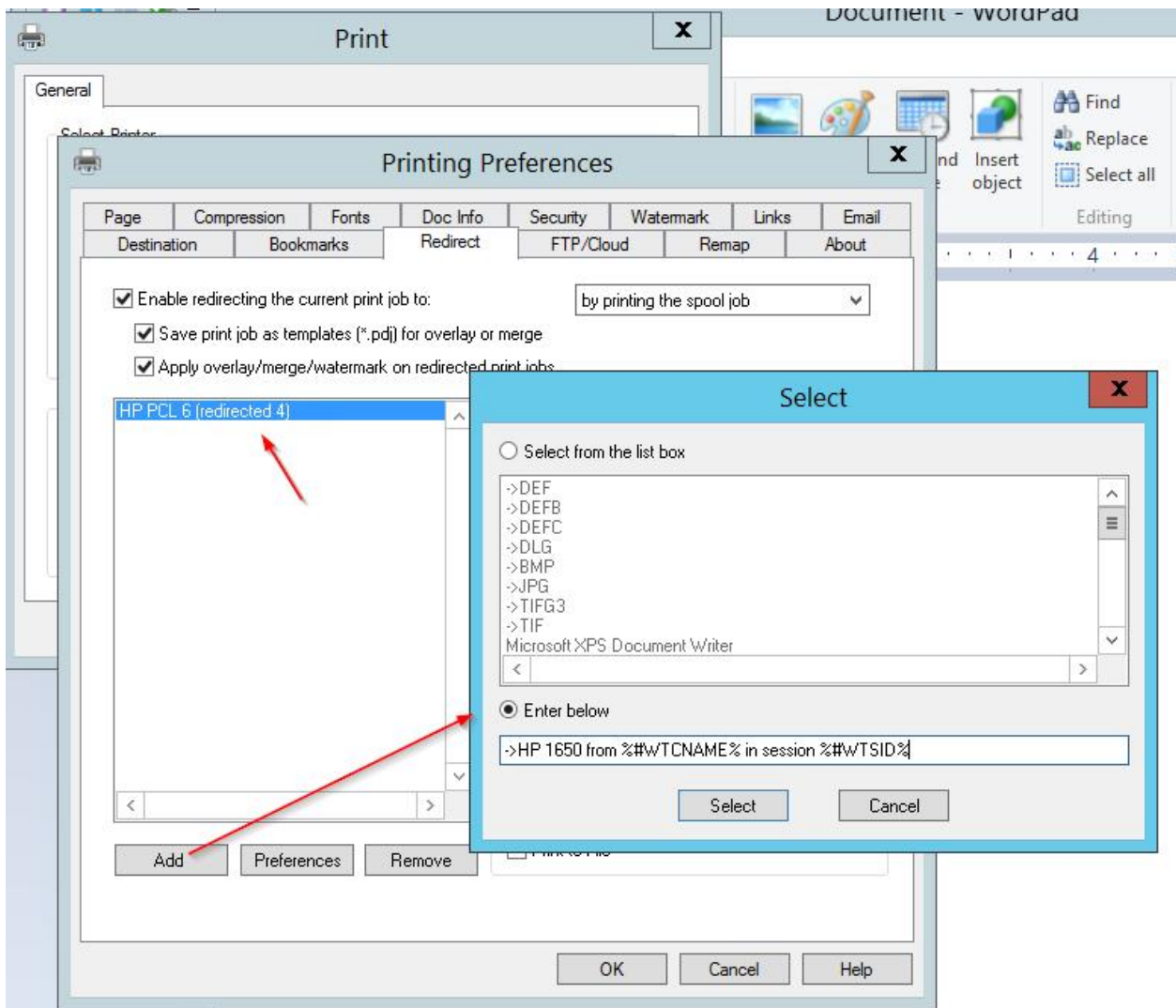
For example, users can direct redirect to a network printer by embedded commands like

```
%%RedirectPrinterList: (\\192.168.1.9\HP Laser 2300)%%
```

Users can define a special printer name using variables for redirecting like

%%RedirectPrinterList: (->HP 5L from %#WTCNAME% in session %#WTSID%)%%

There are 2 special variables %#WTSID% and %#WTCNAME% for representing the terminal session ID and client name. Users can also manually enter the printer name with variables in the dialog for adding printers as illustrating below.



Hence users can define a special redirect printer name using variables as illustrated for printing to a session printer for automation which is effective for all remote sessions. It requires a prefix -> for enabling variable resolving in the printer name argument. The variables %#WTCNAME% and %#WTSID% mean the corresponding client name and client session ID.

- **WTSID**
The current remote session (terminal session) number.
- **WTCNAME**
The client computer name of the remote session.