

# Overlay

## Introduction

Before saving the destination PDF file, eDocPrinter supports [Overlay with] an existing PDF file as a stationery template. It has effects like printing on a stationery paper. However, instead, the final result is a PDF file with its stationery on its background or foreground as defined. The corresponding settings are in the Destination property page and the Option Dialog of [Overlay with].

The option [Overlay with] provides a simple way for overlaying with an existing PDF file as a predefined stationery. This template PDF can be single page or multiple pages. The replace mode [Merge by Overlay] shares a similar function as [Overlay with]. Just [Merge by Overlay] will replace the existing PDF file with the newly generated PDF file by the action [Overlay]. And in [Merge by Overlay], the newly generated PDF is treated as the stationery by default.

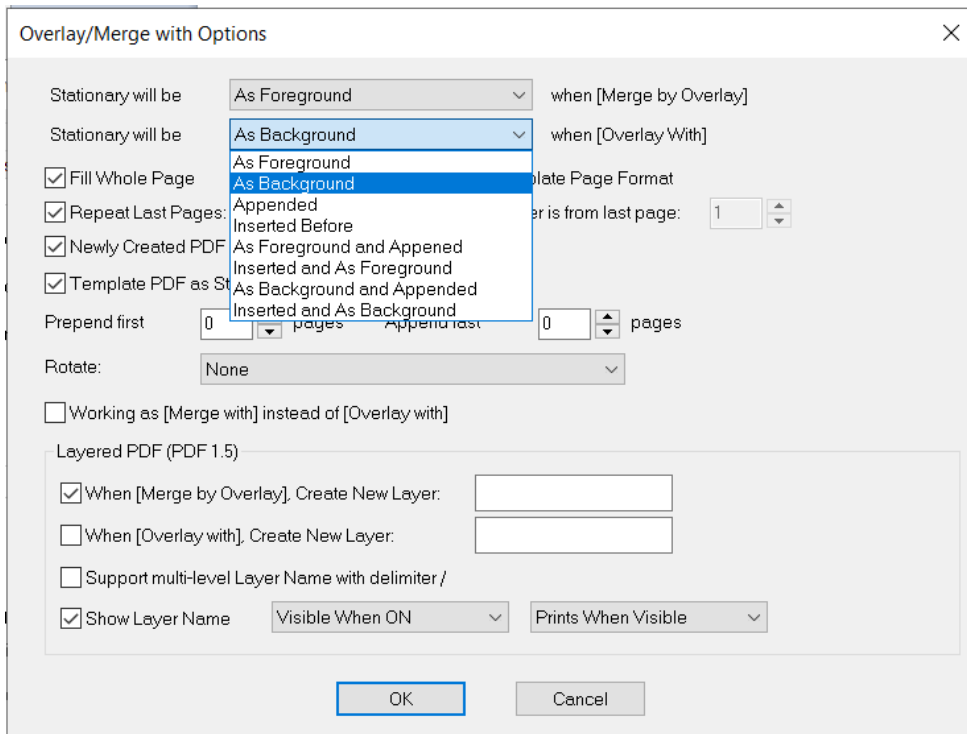
Users can change the overlay modes and other related settings for [Merge by Overlay] and [Overlay with] in the Option dialog by clicking the “Option...” button besides the checkbox [Overlay with] in the Destination property page. Users can override settings like the fit mode, the repeat interval, overlay or underlay (as foreground or background), the default layer name, and etc.

The list below explains all modes supported by [Overlay with]. Its corresponding registry setting and command is **DestOverlayWithType**. Its default value is 1 (Mode 1).

## Overlay Modes

### ***Mode 0: Stationery will be [As Foreground] when [Overlay with]***

In this mode, the page content of the template PDF will be treated as the foreground stationery when being overlaid with. The simplest case is that there is only one page in the template PDF. By default, its page content will be used as the foreground stationery on all pages of the job PDF file created. It works like printing traditionally on stationery papers. The difference is that the final result is a PDF file with its stationery, e.g., header/footer/logo, as foreground on all pages.



***Mode 1: Stationery will be [As Background] when [Overlay with]***

This is the default mode of [Overlay with]. In this mode, the page content of the template PDF will be treated as the background stationery when being overlaid with. The simplest case is that there is only one page in the template PDF. By default, its page content will be used as the background stationery on all pages of the job PDF file created. It works the same as printing traditionally on stationery papers. The difference is that the final result is a PDF file with its stationery, e.g., header/footer/logo, as background on all pages.

***Mode 2: Stationery will be [Appended] when [Overlay with]***

In this mode, the pages of the template PDF will be appended to each page when being overlaid with. The simplest case is that there is one page in the template PDF only. By default, this page will be copied and appended after each page of the job PDF file created. It works like printing an extra stationery page after each page printed. Or it works like printing on papers with the stationery on its backside. The difference is that the final result is a PDF file with template pages appended.

### ***Mode 3: Stationery will be [Inserted before] when [Overlay with]***

In this mode, the pages of the template PDF will be inserted before each page when being overlaid with. The simplest case is that there is one page in the template PDF only. By default, this page will be copied and inserted before each page of the job PDF file created. It works like printing an extra stationery page before each page printed. Or it works like printing on backsides of papers with the stationery on their front sides. The difference is that the final result is a PDF file with template pages inserted.

### ***Mode 4: Stationery will be [As Foreground and Appended] when [Overlay with]***

In this mode, it assumes two pages of the template PDF will be used as a group for overlaying. The first page will be treated as the foreground stationery when being overlaid with. The second page will be appended to each page when being overlaid with. The simplest case is that there are only two page in the template PDF. By default, the first page content will be used as the foreground stationery on all pages of the job PDF file created. The second page will be copied and appended after each page of the job PDF file created. It works like printing on stationery papers with extra predefined contents on paper backsides. The difference is that the final result is a PDF file with the stationery stamped and template pages appended.

### ***Mode 5: Stationery will be [Inserted and As Foreground] when [Overlay with]***

In this mode, it assumes two pages of the template PDF will be used as a group for overlaying. The first page will be inserted before each page when being overlaid with. The second page will be treated as the foreground stationery when being overlaid with. The simplest case is that there are only two page in the template PDF. By default, the first page will be copied and inserted before each page of the job PDF file created. The second page content will be used as the foreground stationery on all pages of the job PDF file created. It works like printing on backsides of stationery papers with extra preprinted contents on their front sides. The difference is that the final result is a PDF file with template pages inserted and the stationery stamped.

### ***Mode 6: Stationery will be [As Background and Appended] when [Overlay with]***

In this mode, it assumes two pages of the template PDF will be used as a group for overlaying. The first page will be treated as the background stationery when being overlaid with. The second page will be appended to each page when being overlaid with. The simplest case is that there are only two page in the template PDF. By default, the first page content will be used as the background stationery on all pages of the job PDF file created. The second page will be copied and appended after each page of the job PDF file created. It works like printing on stationery papers with extra predefined contents on paper backsides. The difference is that the final result is a PDF file with the stationery stamped and template pages appended.

### ***Mode 7: Stationery will be [Inserted and As Background] when [Overlay with]***

In this mode, it assumes two pages of the template PDF will be used as a group for overlaying. The first page will be inserted before each page when being overlaid with. The second page will be treated as the background stationery when being overlaid with. The simplest case is that there are only two page in the template PDF. By default, the first page will be copied and inserted before each page of the job PDF

file created. The second page content will be used as the background stationery on all pages of the job PDF file created. It works like printing on backsides of stationery papers with extra preprinted contents on their front sides. The difference is that the final result is a PDF file with template pages inserted and the stationery stamped.

## Examples of Overlay with

- ***Overlaying with 1-page template PDF as stationery:***  
There is only one page in the template PDF. By default, its page content will be used as the background/foreground stationery on all pages of the job PDF file created.
- ***Overlaying with different stationeries on even and odd pages by using a 2-page template PDF:***  
Please prepare a 2-page PDF file as the template. And change the option [Repeat Last Pages] to 2 (its command is **DestOverlayRepeatInterval** with default value 1). It will use the content of the first page of the template file as the stationery overlaid on all odd pages and the content of the second page on all even pages of the PDF file created.
- ***Overlaying with different stationeries on first page and remaining pages by using a 2-page template PDF:***  
Please prepare a 2-page PDF file as the template. And keep the option [Repeat Last Pages] as the default value 1. It will use the content of the first page of the template file as the stationery overlaying on the first page of the destination PDF file. Then it will use the content of the second page as the stationery overlaid on all other remaining pages of the destination PDF file.
- ***Overlaying with a predefined stationery on all pages and adding an additional page of claims on the backside of each page:***  
Please prepare a 2-page PDF file as the template. Select the overlay mode to [As Foreground and Appended]. And keep the option [Repeat Last Pages] as the default value 1. In this mode, it assumes two pages of the template PDF will be used as a group for overlaying. The first page content of the template will be used as the foreground stationery on all pages of the job PDF file created. The second page of the template will be copied and appended after each page of the job PDF file created. When printing out, it works like printing on stationery papers with additional predefined contents on paper backsides.