

eDocPrinter PDF Pro Installer Command Line Options and Silent Installation Guide

Last update: 24 Nov 2007

Introduction:

This technical note is dedicatedly for Network Administrator/MIS people to deploy eDocPrinter PDF Pro to hundreds of desktops by their remote administration tools.

Concepts:

Since Ver 5.55, all installation packages of eDocPrinter PDF Pro support silent installation and extra command line variables defined by users. Restarting spooler is included by default. Users can disable by setting proper values in the command line. Refer the following example for details.

Currently, users can utilize the existing installation packs with the /s parameter to do silent installation. There is no special installation package for silent installation any more.

Since Ver 5.52, standalone French and German installation packages support built-in silent installation function. Users can just replace the name of edocpdfv5inst to edocpdfv5deu or its corresponding one.

Since Ver 6.02, eDocPrinter PDF Pro supports Office-Addins. Office-Addins will be installed by default. Two variables are added to control installation behaviour of Office-Addin, [NoOfficeAddin] and [NoAddinAllUsers]. Administrators can set these variables to "1" to disable installing Office-Addins. Please refer to the following examples for details.

Since Ver 6.03, eDocPrinter PDF Pro supports multiple profiles. Users can add multiple printer instances with their own profiles. Administrators can disable multiple profiles by proper settings. Every printer instance will have its own global settings in HKEY_LOCAL_MACHINE. The registration information is still kept as global to all printer instances for convenience.

Since build 2918, the Office addin for eDocPrinter PDF Pro provides 2 variables for updating normal.dot of Word. [WordNotRemoveMenus] and [WordNotUpdateNormalDOT]. Administrators can set the default values to [True] or [False] using the similar way for defining variables in installer command line. Administrators can also set them by directing access of registry settings.

Since Ver 6.09 build 3290, two variables, [NoAdvToolbox] and [NoDrag2PDF], are added for control installing of advanced toolbox (Drag2PDF). When set to 1, the installer will not install the optional components.

Since Ver 6.14 build 3362, users can call addprn with proper argument to run uninstaller silently. Variable RestartExplorer=1 can be used to restarting explorer.exe (Windows shell) process before installation like RestartSpooler. Variable DestPostSaveDlg=1 can be used to set the default print profile to display SaveAs dialog after print job spooled. Variables ERP2PDFPrnName and Drag2PDFPrnName are used to assign the different printer profile name instead of using the default ones. In 6.14, it will install dummy port by default. Administrators may use “addprn rl” or “addprn rt” to change the port attached.

Since Ver 6.16 build 3902, users can call addprn with proper argument to delete specific printer instance or reset (clear) its profile settings. (“addprn dg profilename”, “addprn dr “profilename”) Three installer variables, NoRedirect2Print, NoCmd2Action, and NoText2Hash, are added for selecting specific Adv. Pack features.

Since Ver 6.18 build 4058, users can call addprn with proper argument to install and uninstall office addins without reinstalling. MSI installer is also supported since 6.18. Because Windows (x64) requires native 64bit mode driver, the installer for x64 is different from the original one for 32bit Windows 2000/XP/2003. Normally, the installer is post-fixed with “x64” for x64 installers. Installers for x64 are only for Windows XP/2003 x64 edition. Normal installers without x64 annotation are for ordinary Windows 2000/XP/2003 32bit versions.

Since Ver 6.24 build 4398, two installer variables RemoteRegServer and RegkeyEXE added for controlling installer to set these properties. If RegkeyEXE is set properly, the installer will call the silent key registration utility after installation. An genmst.exe utility is also provided for creating MST by a text file with listing properties to be changed for customizing the MSI installer.

Since Ver 6.34 build 5032, for Vista support, adding manifest “requireAdministrator” in “addprn.exe” for running as elevated administrator mode in Vista. (Additional addprn2.exe is added for running in normal mode without such manifest)

Since Ver 6.38 build 5168, PDFSealer is integrated in eDocPrinter installer as an optional Ent. Pack feature. Administrators can set PackType=ENT for installing full ENT features when doing silent deployment. Additional properties NoEntToolbox, NoPDFSealer, and NoFTP are added.

Usage Notes:

ITEKSOFT Corporation Technical Notes

<http://www.iteksoft.com/>

All Rights Reserved

Install Example (I)

C:\>edocpdfinst --> normal installation mode (as usual as ordinary installation)

Install Example (II)

C:\>edocpdfinst /s --> (silent mode, use default directory and settings)

Or

C:\>edocpdfinst -s --> (silent mode, use default directory and settings)

Suggested commands for silent installation:

1. C:\>edocpdfinst -s
2. C:\>regkey4yourcompany.exe (silent registration, only available to customers with volume purchasing)

Install Example (III): How to define variables to override default installer behaviour

(i) Override Language Selection

C:\>edocpdfinst -s -var:LangID=FRA

(ii) Override Default Installation Path

C:\>edocpdfinst -s -var:InstallPath="C:\Path Specified"

(iii) Disable Restarting Spooler before installing or updating the driver

C:\>edocpdfinst -var:RestartSpooler=0

(iv) Enable Restarting Spooler before installing or updating the driver, this is the default behaviour

C:\>edocpdfinst -var:RestartSpooler=1

(v) Do not install Office-Addin (available after Ver 6.02)

C:\>edocpdfinst -s -var:NoOfficeAddin=1

(vi) Disable Multiple Profiles (available after Ver 6.03)

C:\>edocpdfinst -s -var:DisableProfiles=1

(vi) Do not install advanced toolbox, Drag2PDF (available after Ver 6.09)

C:\>edocpdfinst -s -var:NoAdvToolbox=1

(vii) PackType: ADV, STD, ALL (available after Ver 6.14)

C:\>edocpdfinst -s -var:PackType=ALL

This variable can be used to replace -var:NoAdvToolbox

(vii) Disable specific feature in Adv. Pack by variables (available after Ver 6.16)

C:\>edocpdfinst -s -var:NoRedirect2Print=1

Just as NoDrag2PDF, administrator can assign NoRedirect2Print, NoCmd2Action, NoText2Hash to disable specific feature.

Tip:

Use "net stop spooler", and "net start spooler" will eliminate the reboot requirement after installation in most cases if there is previous version existing in the computer. However, because of no message prompt, reboot is the safest way to ensure the newer version installed successfully.

This installation does NOT set the printer to the default one.

Default target directory: /Program Files/ITEKSOFT/eDocPrinter PDF Pro/

Users can also input the command line in the "Run..." of Windows "Start" Menu.

Uninstall:

There is an EXE in the installed directory named as "addprn.exe"

The following batch command line can be used to remove the printer silently!!

C:\>addprn r

Since ver 6.14, users can use addprn.exe to call the uninstaller directly.

C:\>addprn un

Registration Key Deployment:

Similarly we provide a key registration command line (an EXE form) for turning the installed version into registered ones without requiring entering keys by users. Customers with volume purchasing may ask us for this utility. We will compile an EXE dedicated for each unique customer with volume purchasing.

Since Ver 6.24, administrator can assign the variable (or property inMSI) of RegkeyEXE to force the installer to call the EXE to activate the registration information during installation.

Remote Registry Settings (RemoteRegServer):

Since Ver 6.24, a Remote2Reg addin (requires ADV licenses) is added to support configure eDocPrinter to read settings from some specific remote server. (registration

information still need to be activated by per-machine basis as registration key deployment mentioned above) Administrator may set this variable (or property in MSI) to enable the function during deployment.

Administrators can also change this value by PropAdm or directly modify this value by editing registry.

However, this feature requires the local workstations have permission on reading the server registry. Normally, it requires workstation is logged on in active directory and administrators may need to add "Software\ITEKSOFT" key in HKEY_LOCAL_MACHINE\SYSTEM\CurrentControlSet\Control\SecurePipeServers\winreg\AllowedPaths in the server for allowing other workstations or machines to read the centralized settings of eDocPrinter because ordinary users account may not have permission to remote reading the HKLM registry. (Please read <http://support.microsoft.com/kb/314837/> for more details.)

It may induce some side-effects if network connection failed or time-out. For example, if enabling RemoteRegServer, but the network connection failed or the server is not responding. In such cases, it may take 20~30 seconds trying to connect before timeout. (i.e. showing property pages may delay due to this time-out period)

When enabling this feature (requiring ADV pack license), the eDocPrinter will load the HKLM default settings and HKLM MUST settings from the remote server HKLM instead of the local machine. Administrators may also utilize the GPO (Group Policy) to force the HKLM settings for group computers without using RemoteRegServer.

Office-Addin(s):

Office-Addins supported by eDocPrinter PDF Pro is fully compliant with COM-Addin model. Administrators can control them by the registry values of MS Office. For example, the following command line will un-register the office-addin DLL to disable the Office-Addins.

```
C:\Program Files\ITEKSOFT\eDocPrinter PDF Pro>regsvr32 /u  
epdfaddin.dll
```

These two variables [WordNotUpdateNormalDOT] and [WordNotRemoveMenus] are used to assist administrators to control the word-addin behaviour. By default, these 2 values are both [False] and the addin will update and add extra menu and icons when Word starts. This will affect the normal template (normal.dot) settings. In some cases, multi-users may share the same normal.dot without writing permission. In such cases, administrators may want to avoid warning dialog for saving normal.dot [Word cannot

save changes to global template because ...] when quitting Word. By these 2 variables, this can be achieved.

For normal users account with read-only permission of global normal template, administrators can set [WordNotUpdateNormalDOT] to [True] when installing or set them in the registry (HKCU\Software\ITEKSOFT\eDocPrinter\PDF\5.0\Word Addon\). With this option is [True], the word-addin will not add or modify menus and icons in normal template. However, the normal template initially may not have the menus and icons for eDocPrinter PDF Pro, administrators need to modify the normal template by setting [WordNotRemoveMenus] to [True] and [WordNotUpdateNormalDOT] to [False] in administrator account to update the normal.dot to proper configuration. By default, the addin will remove all menus and icons related to eDocPrinter PDF Pro when quitting Word. With [WordNotRemoveMenus] is [True], the extra menus and icons will be kept in the normal.dot after leaving Word.

Since build 3168, administrators can directly set the global default values of Office-addin variables under the same sub-keys in HKEY_LOCAL_MACHINE as other driver settings.

Since build 3218, when [WordNotRemoveMenus] is set [True], the addin will update the normal.dot when locale is changed or menus are not existing (a fresh installation). It will not remove the menus and icons when leaving Word.

(i) Set WordNotUpdateNormalDOT to True for ordinary users

C:\>edocpdfinst -var:WordNotUpdateNormalDOT=True

(ii) Set WordNotRemoveMenus to True for updating normal.dot

C:\>edocpdfinst -var:WordNotRemoveMenus=True

Usage of addprn.exe:

There is an EXE in the installed directory named as "addprn.exe", which provide some convenient functions by passing proper arguments.

(i) Remove printer driver

C:\>addprn r

(ii) Force to install dummy port

C:\>addprn p

(iii) Add new printer instance with prompt dialog (after Ver 6.03)

C:\>addprn an

(iv) Add new printer instance silently (after Ver 6.03)

C:\>addprn as "printer name"

C:\>addprn az "printer name" after 6.14; add printer profile silently but without copying settings from initial "eDocPrinter PDF Pro" profile

(v) Show property pages directly

C:\>addprn q

(vi) Show property pages for a specific printer profile (after Ver 6.03)

C:\>addprn q "printer name"

(vii) Copy profile registry settings (after build 2925)

C:\>addprn g "source profile name" HKCU "target profile name" HKCU

where profile name is something like "Profiles\eDocPrinter PDF Pro". HKCU can be replaced as HKLM for representing HKEY_LOCAL_MACHINE.

C:\>addprn g "Profiles\eDocPrinter PDF Pro" HKCU "Profiles\New PDF1" HKCU

(viii) Clear all registry settings of eDocPrinter PDF Pro in HKCU and HKLM

C:\>addprn c

(ix) Uninstalling of eDocPrinter PDF Pro (available after Ver 6.14)

C:\>addprn un uninstalling normally;

C:\>addprn us uninstalling silently;

C:\>addprn uz uninstalling silently but without removing registry settings;

(x) Close epdfact.exe immediately (available after Ver 6.14)

```
C:\>addprn re  
(Obsolete since 6.18, superceded by 'xa' and 'xaa'  
argument)
```

(xi) Remove all printer profiles (available after Ver 6.14)

```
C:\>addprn rp  
C:\>addprn rq          silently without error message;
```

(xi) Remove printer driver directly (available after Ver 6.14)

```
C:\>addprn rv  
C:\>addprn rw          silently without error message;
```

(xi) Restart explorer.exe (Windows shell) (available after Ver 6.14)

```
C:\>addprn x
```

(xii) Configure port attached (available after Ver 6.14)

```
C:\>addprn pn          install dummy port with message  
C:\>addprn ps          install dummy port silently  
C:\>addprn pl "port name"      set all eDocPrinter instances  
to attach "port name"; if "port name" not assigned, it  
means using "LPT1:"; it pops a message when finished.  
C:\>addprn pt "port name"      set all eDocPrinter instances  
to attach "port name"; if "port name" not assigned, it  
means using "LPT1:"; it operates silently.
```

(xiii) Delete specific printer instance (profile) (available after Ver 6.16)

```
C:\>addprn dg "printer name"  
It will clear (delete) all registry settings of the printer  
profile and delete the printer instance.
```

(xiv) Reset (clear) specific printer instance (profile) settings (available after Ver 6.16)

```
C:\>addprn dr "printer name"  
It will clear (delete) all registry settings of the printer  
profile specified. Hence the profile settings will be in  
default values.
```

(xv) Close epdfact.exe immediately (available after Ver 6.18)

```
C:\>addprn xaa  
(force to close all epdfact.exe instances in all sessions,  
need administrator rights)  
C:\>addprn xa
```


(close epdfact.exe instance in current user)

Since Ver 6.20, when running in synchronous mode, (i.e. epdfact.exe run as resident monitor process), epdfact.exe shall close itself when user logging off.

(xvi) Register & un-register COM (available after Ver 6.18)

```
C:\>addprn av "filename.dll"  
(register COM, equivalent to regsvr32 /s)  
C:\>addprn au "filename.dll"  
(unregister COM, equivalent to regsvr32 /s)
```

(xvii) Install & un-install Office addins (available after Ver 6.18)

```
addprn aa wxp 1/2/3  
(install Office addins, where 1 means HKLM, 2 HKCU; 3 both;  
wxp means Word, Excel, or PowerPoint)
```

For example:

```
C:\>addprn aa w 1  
(register eDocprinter Word addin in HKLM, ie.all users)  
C:\> addprn aa wxp 1  
(register eDocprinter Word, Excel, PowerPoint addins in  
HKLM, ie.all users)
```

```
addprn aa wxp 1/2/3  
(uninstall Office addins)
```

For installing office addins completely, users need to register epdfcom.dll and epdfaddin.dll first.

```
C:\>addprn av epdfcom.dll  
C:\>addprn av epdfaddin.dll
```

For x64, if users need to install office addins manually for 32bit office. (Office 2000/XP/2003 are still 32bit applications), users have to use the following arguments

```
addprn aa/aa wxp 201
```

For example,

```
C:\>addprn aa wxp 201
```

Because Wow64 registry is only in HKLM, there is no need for using this syntax for installing Office-addin in HKCU only (current user).

(xviii) Install & un-install Office addins (available after Ver 6.20)

addprn aaa

(registering the epdfcom.dll epdfaddin.dll and all Office addins related registry entries for all users in HKLM of the machine)

For x64, please run "addprn32 aaa" instead, as the current Office and Office Addins are 32bit only. (addprn32.exe is the 32bit version addprn.exe when installing in x64)

For example,

C:\>addprn aaa

(xviii) Check & report Office addins installation status (available after Ver 6.20)

addprn aak > log.txt

(it will log all registry entries related to addin installation in a log file for checking.)

Please use this command in CMD.exe (Command Window) prompt.

(ixx) Set default printer registry string value

C:\>addprn pf "printer name"

(Set "printer name" as the default printer)

(xxi) Copy file

C:\>addprn af "src filename" "dest filename"

(copy "src filename" file to "dest filename")

(xxii) Delete file

C:\>addprn afd "filename"

(delete "filename")

(xxiii) Write registry & delete registry string

addprn ag 1/2/3 "key path" "key name" "string value"

addprn agd 1/2/3 "key path" "key name"

For example,

```
C:\>addprn ag 1 "Software\eDocPrinter" "TestKey" "Value"
```

```
C:\>addprn agd 1 "Software\eDocPrinter" "TestKey"
```

Similarly, in x64, 201 represents writing into Wow64 in HKLM

Language Resources:

Currently the following LangIDs are supported

DAN – Danish

DEU – German

ENU – English

ESN – Spanish

FRA – French

ITA – Italian

NLD – Dutch

PTB – Brazilian Portuguese

PTG – Portugal Portuguese

SVE – Swedish

MSI Installer:

Administrators need to uninstall previous version before installing the new version MSI. GPO deployment will force installing the new version directly. Please refer Windows MSI for more details msiexec command and argument available.

(i)

```
C:\>msiexec /?
```

(show options and arguments available)

(ii) Run MSI installer normally

```
C:\>edocpdfinst.msi
```

or

```
C:\>msiexec /i edocpdfinst.msi
```

where edocpdfinst.msi is the installer name which may be different from the one stated here.

(iii) Silent installation by MSI

```
C:\>msiexec /qn /i edocpdfinst.msi
```

(iv) For MSI installers, users have to use the following syntax to set the properties (variables).

```
C:\>msiexec /i edocpdfinst.msi InstallDir="c:\edocprinter pdf pro"
```

As the example, users can assign property value directly in the command line with PROPERTY=Value form. In MSI installer, the variable for installing path is INSTALLDIR.

Currently, the following variables (properties) are supported in MSI installer with the same name as EXE installer

PackType=ADV or STD or ENT (ENT is available since Ver. 6.38)

NoOfficeAddin=0 or 1

NoAdvToolbox=0 or 1

NoDrag2PDF=0 or 1

RestartSpooler=0 or 1

PrinterName=

Drag2PDFPrnName=

ERP2PDFPrnName=

(Properties below are available since Ver 6.24)
RemoteRegServer=
RegkeyEXE=

(Properties below are available since Ver 6.34)
NoExt2PDF=0 or 1
NoDesktopIcon=0 or 1

(Properties below are available since Ver 6.38)
NoEntToolbox=0 or 1
NoPDFSealer=0 or 1
NoFTP=0 or 1
NoExtraPrn=0 or 1 (no additional printer profiles)

Examples:

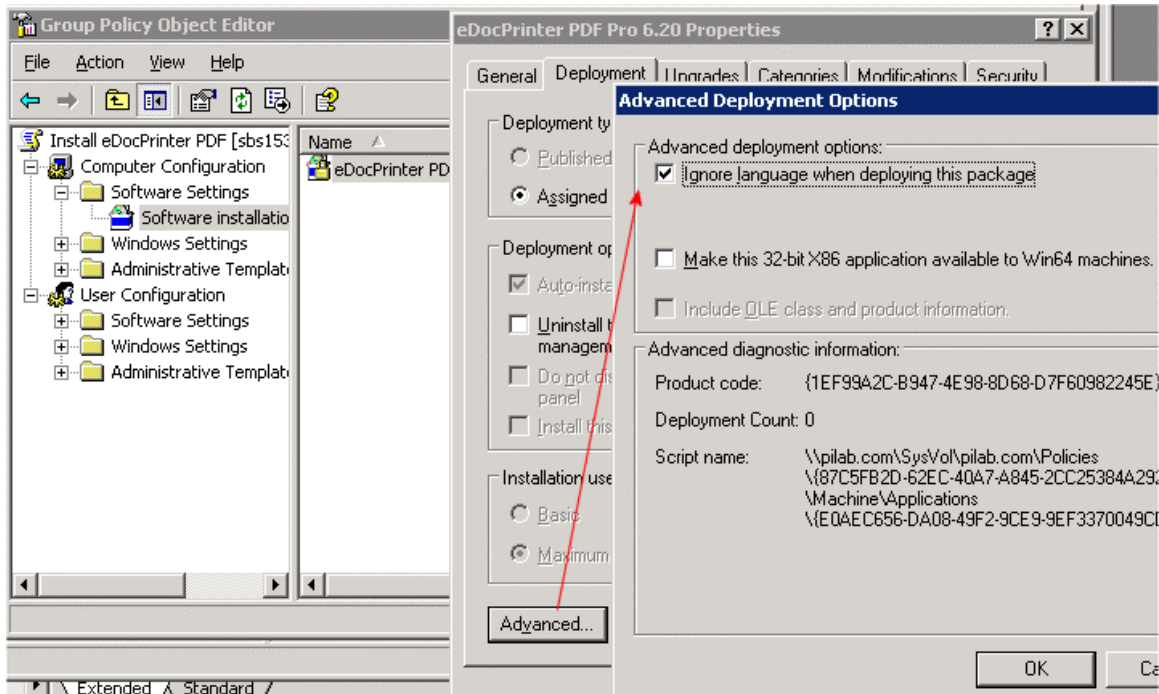
C:\>msiexec /i edocpdfinst.msi PackType=STD
This example execute the installer interactively with PackType=STD.

C:\>msiexec /qn /i edocpdfinst.msi PackType=ADV NoDesktopIcon=1
This example executes the installer silently with PackType=ADV and NoDesktopIcon=1.

C:\> msiexec /qn /i edocpdfinst.msi TRANSFORMS=apply.mst
This example executes the installer with applying the MST "apply.mst". For creating MST, please refer "Apply MST" section.

C:\>msiexec /qn /i edocpdfinst.msi PackType=ENT NoExtraPrn =1
This example executes the installer silently with PackType=ENT and without installing additional printer profiles.

(v) For GPO (Group Policy Object) deployment, please add the MSI as a "Software Installation" under "Computer configuration". And if the language of MSI is different from the system, administrators may need to enable "Ignore language when deploying this package". And x64 MSI is required separately for x64 systems.



(vi) Apply MST:

Administrators can apply MST for deployment to customize the configuration of MSI. Please refer the msiexec parameters for assigning MST by msiexec command-line. For GPO deployment, when adding the new software package, please select “Advanced” as the deployment method to allow adding “modifications” (MST). Administrators can then select the MST to add for this software package deployment.

For a full customization of MSI (creating MST), administrators may need the Microsoft Orca tool to edit the MSI. Please read <http://support.microsoft.com/kb/255905/EN-US/>

For group policy logging, please refer the TechNet information <http://technet2.microsoft.com/windowsserver/en/library/0907105e-7856-4c93-b97f-a9a306623af51033.msp>

Instead, we also provide a simple genmst.exe command-line tool for creating MST to customize the properties of eDocPrinter MSI installer. Administrators can download from <http://www.iteksoft.com/download/genmst.exe>

The usage of genmst.exe:

```
C:\>genmst -t output.mst -p property.txt setup.msi
```

ITEKSOFT Corporation Technical Notes

<http://www.iteksoft.com/>

All Rights Reserved

Where “output.mst” is the path for saving the MST created; “setup.msi” is the original MSI installer. “property.txt” is a simple text file with listing properties to be changed. This text file shall be look like:

```
RemoteRegServer=sbs153
RegkeyEXE=\\sbs153\deployment\regkey4you.exe
PackType=ADV
...
```

A text line represents the property name value assignment. The property name is on the left side of equality-symbol. And the property value is on the right. The utility will read the whole text file to create the MST for the original installer MSI.

In addition to assign the RegkeyEXE as the silent key command, administrators can assign a batch file instead. In the batch file, it can call the real regkey4you.exe and other execution files. For example, it can call the “addprn.exe” for adding extra printer instances.

For example, assign the RegkeyEXE property as:
RegkeyEXE=\\sbs153\deployment\edoc4you.bat

And edit the batch file to contain: (the installation directory may be different)

```
call \\sbs153\deployment\regkey4you.exe
call "%ProgramFiles%\eDocPrinter PDF Pro\addprn.exe" az "eDocPrinter2"
```