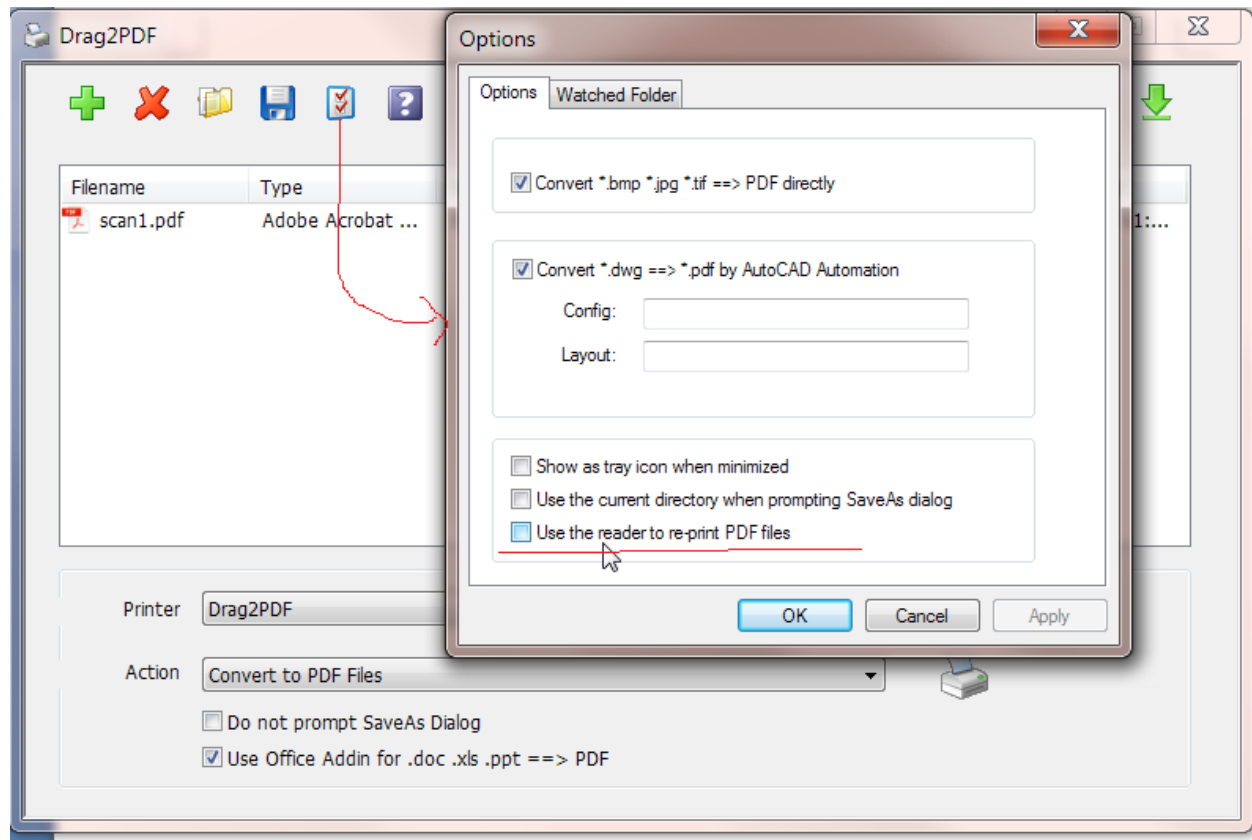
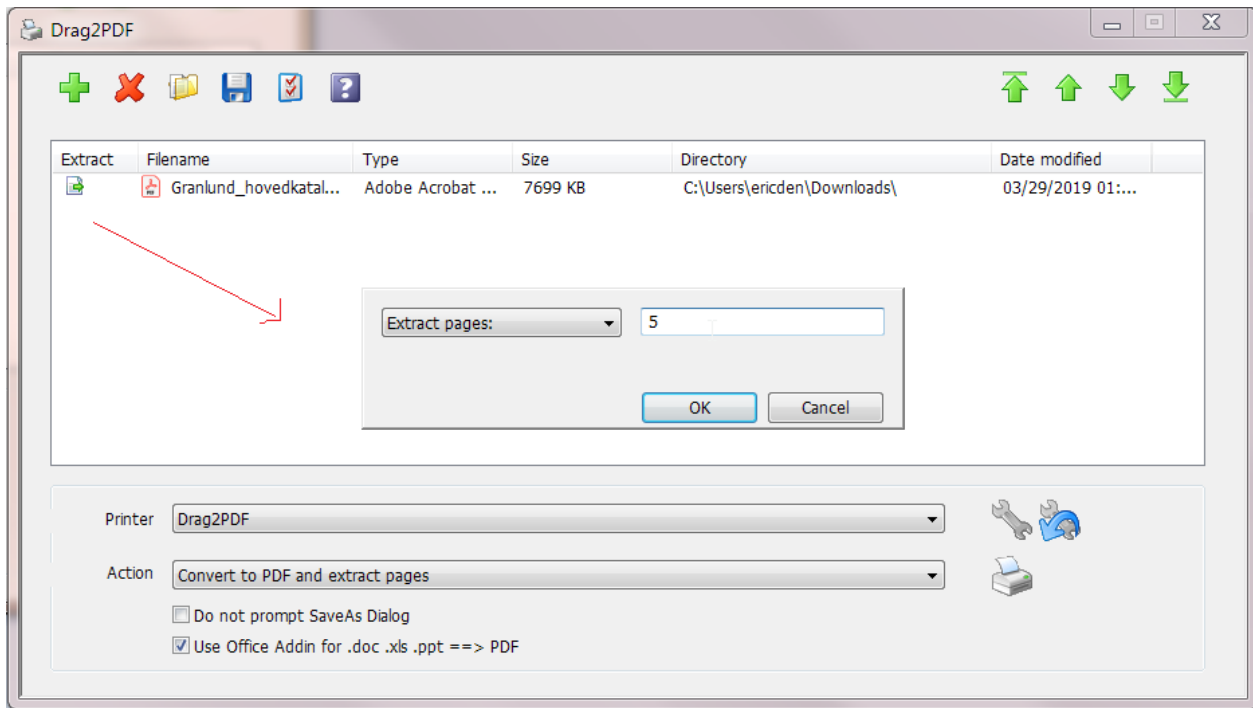
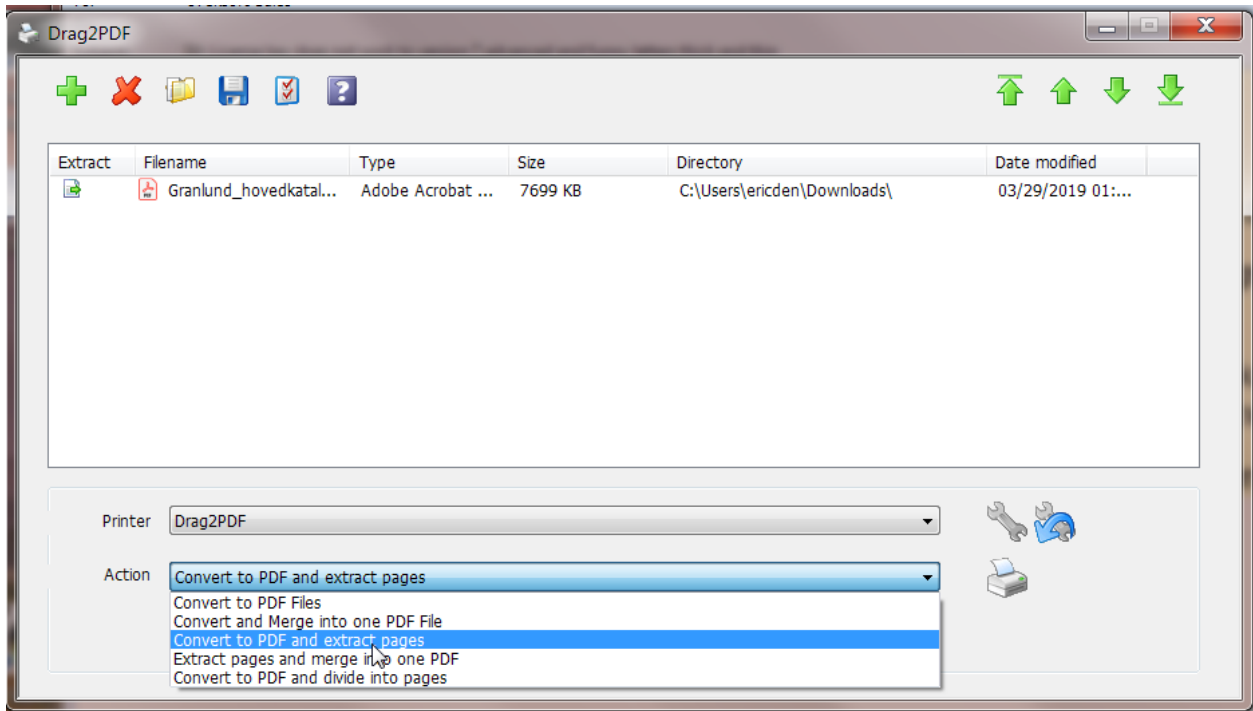


After executing the drag2pdf.exe (in the installation directory or by the drag2pdf shortcut on the current user's Desktop)

Make sure the option [Use the reader to re-print PDF files] is tuned OFF. (the default is OFF)

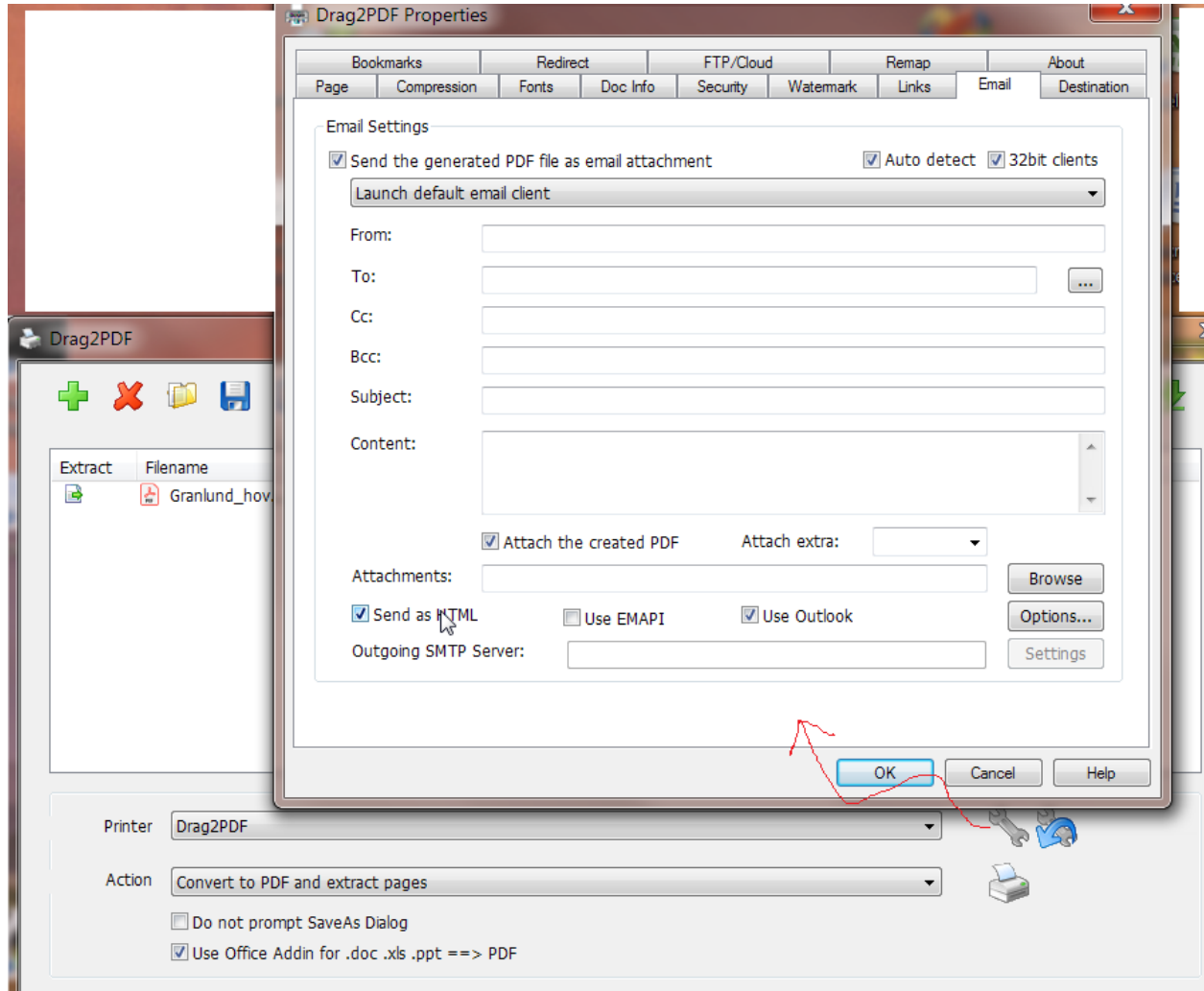


Next, drag and drop files into Drag2PDF UI. Select the conversion mode [Convert to PDF files and extract pages]. Click extract icon to set page ranges to be extracted. Users now can click the printer icon to convert (or process) files or PDF files added.



Besides, users may set additional settings of the edocprinter instance (the default is Drag2PDF printer instance for using with Drag2PDF UI) for PDF post-processing after conversion. For example, users can

turn ON the option [Send the PDF file as Email attachment] in the Email property page. (Turn ON [Use Outlook] if using Outlook as email client.) It will launch the email client and attach the PDF file after processing. Users may also setup related options for stamping watermarks, overlaying with predefined templates, or uploading by FTPS/SFTP.



Drag2PDF command line options

drag2pdf.exe supports the command line mode (a.k.a. pdfmixer cmdline) for batch processing.

arguments

- -s ==> do not show drag2pdf UI
- -sp"printer profile" ==> specify the printer profile, default is "Drag2PDF"

- -sax ==> do not use addin for converting office documents
- -se# ==> enable Email after converting (e.g. -se0 send by email method 0 (default email client), -se2, by method 2 ...)
- -sf"destination path" ==> Specify the destination path. (it requires build Build 5659 or later)
- -sm# ==> specify the conversion mode
For example,
 - sm0 Convert to PDF files
 - sm1 Convert and merge into one PDF file
 - sm2 Convert to PDF files and extract pages
 - sm3 Extract pages and merge into one PDF file
 - sm4 Convert to PDF files and divide into pages
- -sv ==> show SaveAs dialog
- -svx ==> do NOT show Saveas dialog
- -ss# ==> 1/2/3/4/5 for support sorting files by drag2pdf.exe
(1 for sorting filename, 2 for sorting type, 3 for sorting file size, 4 for sorting directory, 5 for sorting modified date)

For example:

- drag2pdf.exe -s -svx c:\temp\kk1.txt
- drag2pdf.exe -s -svx -sm1 -sf"c:\tagerdir\result.pdf" c:\temp\kk1.txt c:\temp\kk2.txt c:\temp\kk3.txt

In Ver. 6.80 or later, it supports wild card in the filenames.

For example, drag2pdf.exe

- drag2pdf.exe -s -svx -sm1 -sf"c:\tagerdir\result.pdf" c:\temp\kk*.txt

In addition, it supports sorting the files argument -ss1/2/3/4/5 for support sorting by drag2pdf.exe command line. (1 for sorting filename, 2 for sorting type, 3 for sorting file size, 4 for sorting directory, 5 for sorting modified date) For example, convert multiple files with sorting by their filenames:

- drag2pdf.exe -s -svx -sm1 -ss1 -sf"c:\tagerdir\result.pdf" c:\temp\kk*.txt

More, Drag2PDF.exe relies on eDocPrinter instances used for controlling options of like stamping watermarks, encrypting, overlaying with predefined template, doing post actions, and etc.

For example, the default instance used by drag2pdf.exe is "Drag2pdf" printer instance. You can modify or create a new edocprinter instance for using with Drag2PDF UI. The option [Launching the default PDF viewer] in its Destination property page determines whether it will open the PDF reader after processing or not. (e.g., create a "MyPDF1" printer by "Add new printer" shortcut in eDocPrinter PDF Pro folder from Windows Start-> All programs)

(You can also control the edocprinter instance by registry setting or embedded commands. Please refer edocprinter-commands.pdf for details.)